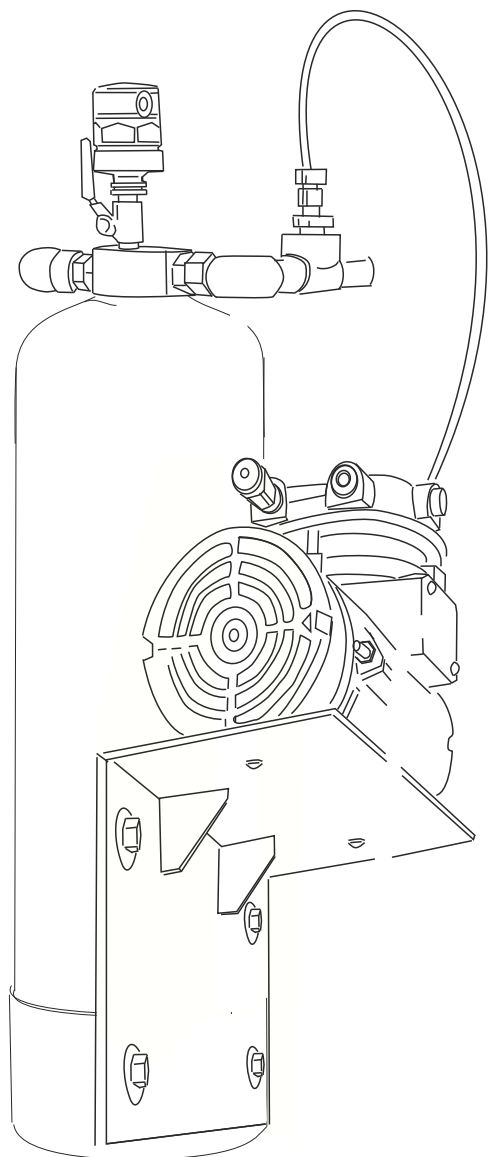


OWNERS MANUAL

(495) 940 87 92
(495) 943 72 86
WWW.EKOMARKET.RU



AP-2
OLF295





		.1
	-2	.2
AP-2		.3
	AP-2	.4
	OLF295	.5
OLF295		.6
	OLF295	.7
		.8
		.9
ETK-I DN20,	: 1 / .	.10
		.11



- 0,2-6,0 ; - 2-36 .

ARI-1"

ACCESSORIES Ltd,

Air Pump Solutions

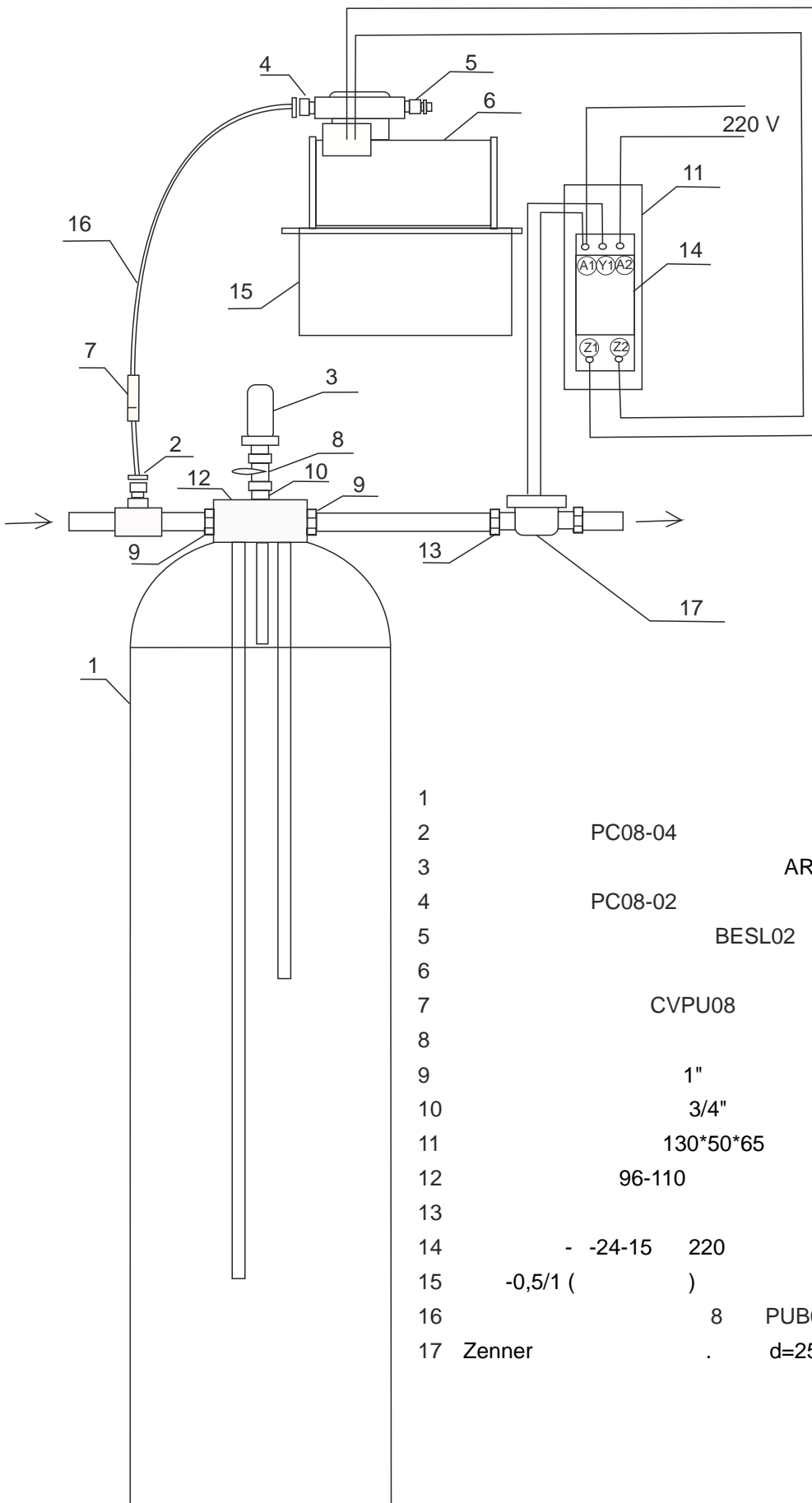
AP2,200

FLOW CONTROL

(10).

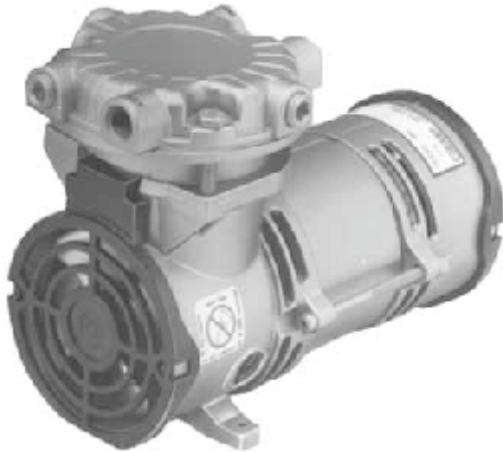
().





1			
2	PC08-04		
3		ARI S-050,	3/4"
4	PC08-02		
5		BESL02	
6			
7		CVPU08	
8			
9		1"	
10		3/4"	
11		130*50*65	
12		96-110	
13			3/4"
14	- -24-15	220	
15	-0,5/1 ()		
16		8	PUB0850
17	Zenner	d=25	1 / .

AP-2



PSC Motor

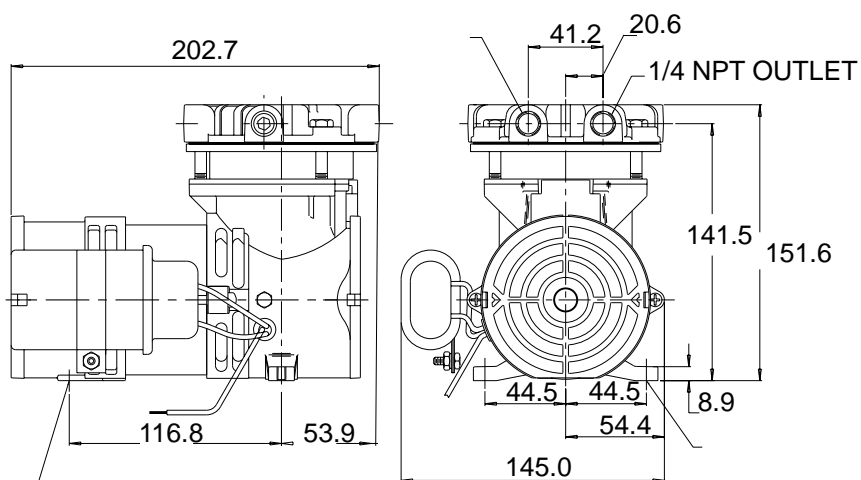
100 psi max. pressure

0.83 CFM open flow

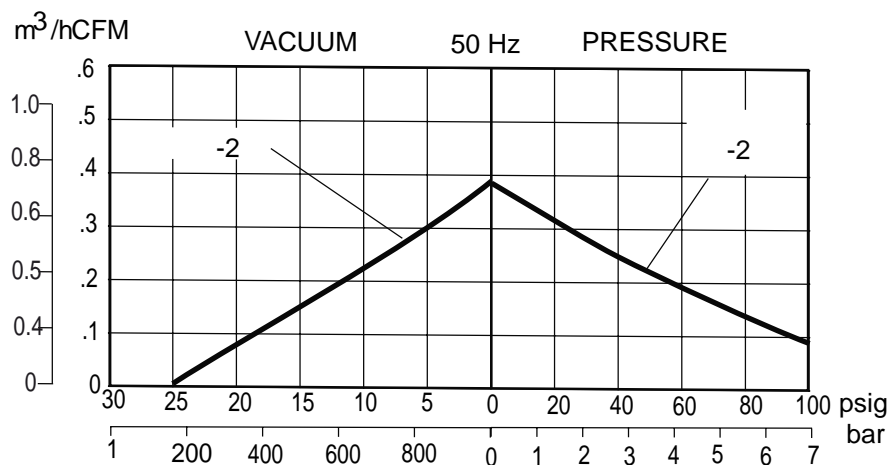
GAST

-2

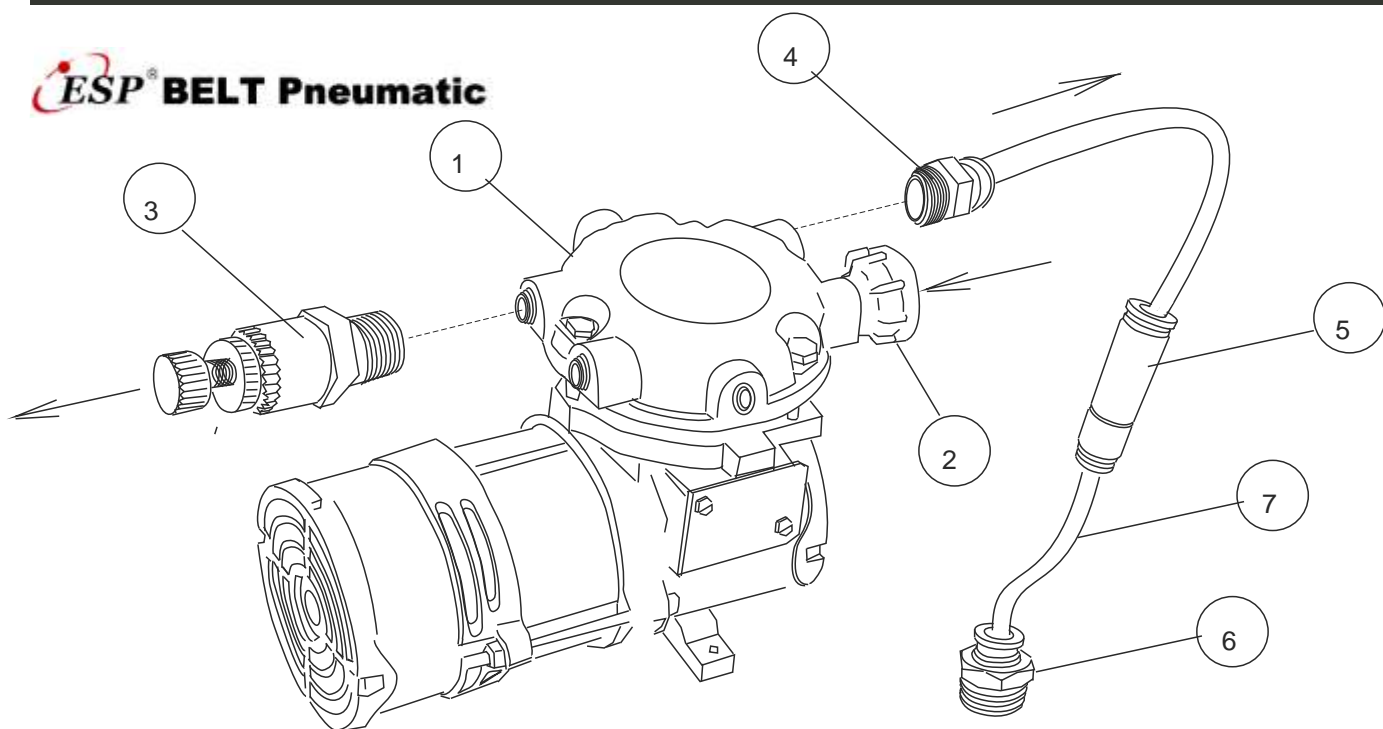
TO
0.83
CFM



			/		HP	KW	kg
			60 Hz	50 Hz			
AP-2	230/220-60/50-1	PSC	1575	1275	1/16	0.05	3.9

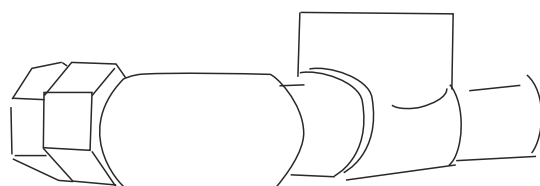


ESP® BELT Pneumatic



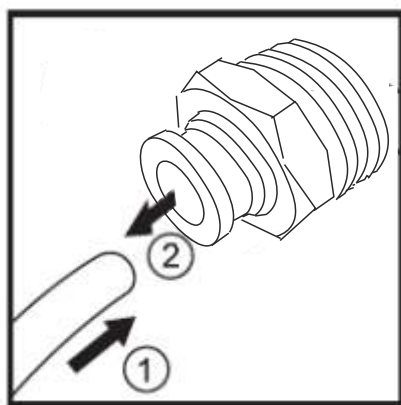
- 1.
- 2.
- 3.
- 4.
- 5.
- 6.
- 7.

BESL02*
 PC08-02
 CVPU08
 PC08-04
 8 PUB0850

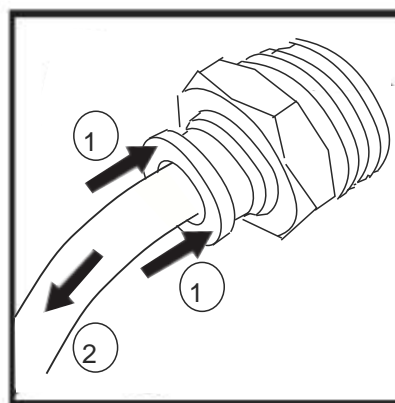


15-20%.

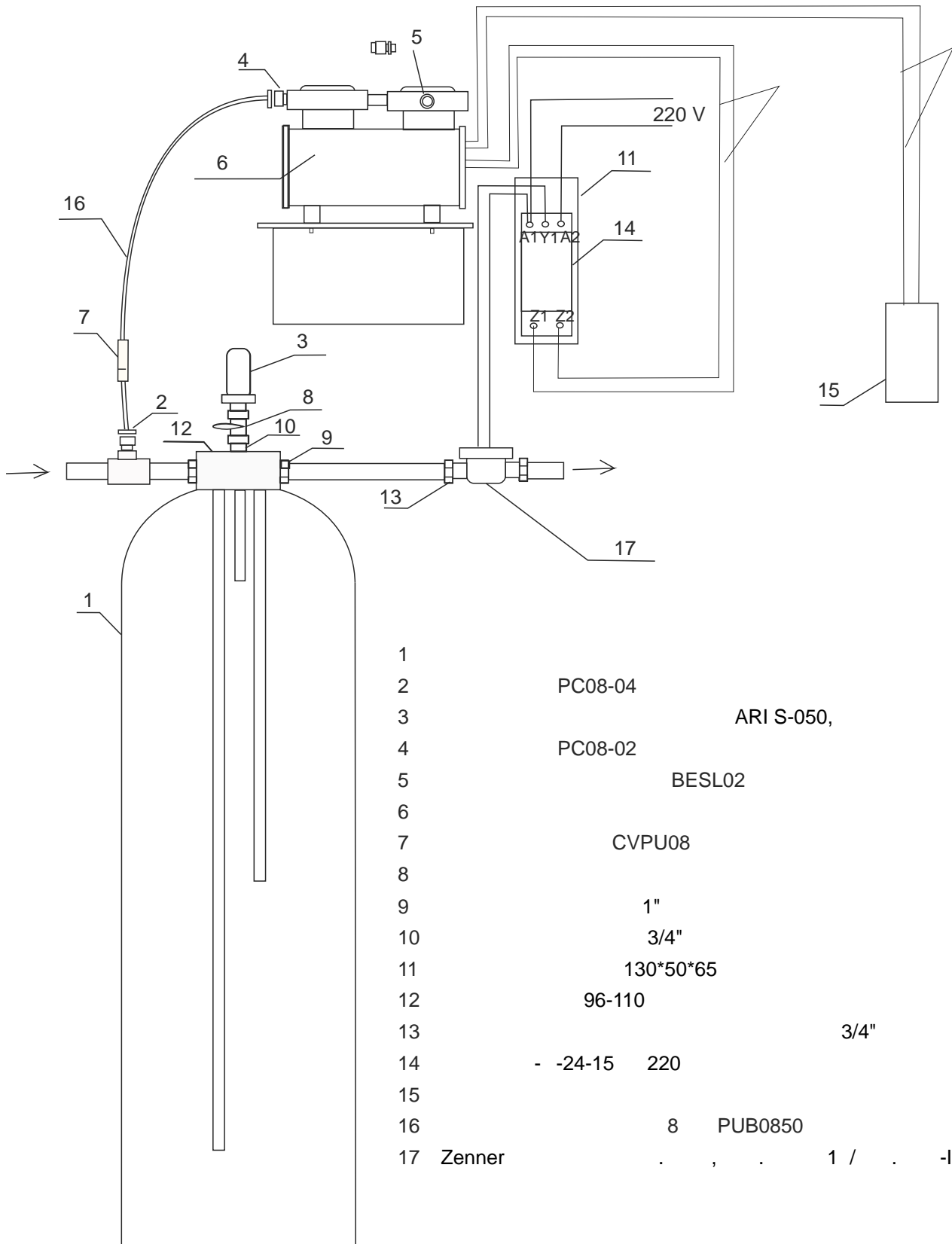
ARI



- 1)
- 2)



- 1)
- 2)



- | | | | |
|----|----------|------------|--------------|
| 1 | | | |
| 2 | PC08-04 | | |
| 3 | | ARI S-050, | 3/4" |
| 4 | PC08-02 | | |
| 5 | | BESL02 | |
| 6 | | | |
| 7 | | CVPU08 | |
| 8 | | | |
| 9 | | 1" | |
| 10 | | 3/4" | |
| 11 | | 130*50*65 | |
| 12 | | 96-110 | |
| 13 | | | 3/4" |
| 14 | - -24-15 | 220 | |
| 15 | | | |
| 16 | | 8 | PUB0850 |
| 17 | Zenner | . | , . 1 / . -I |

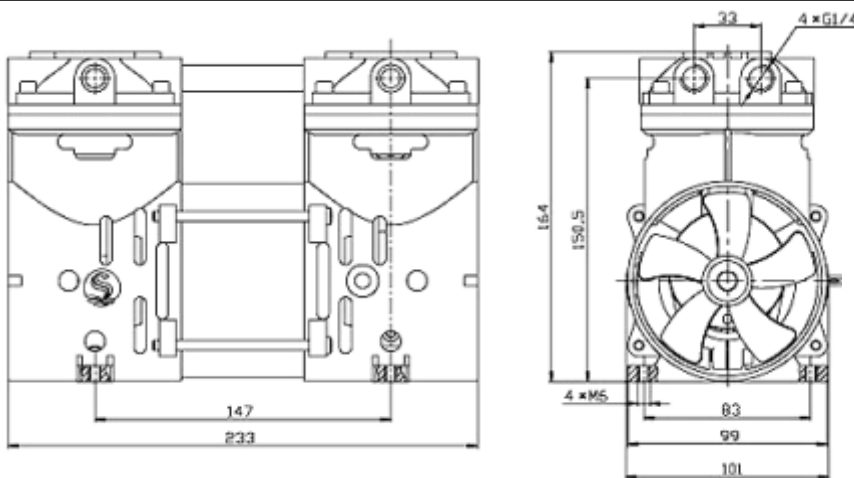
OLF295

OLF 295

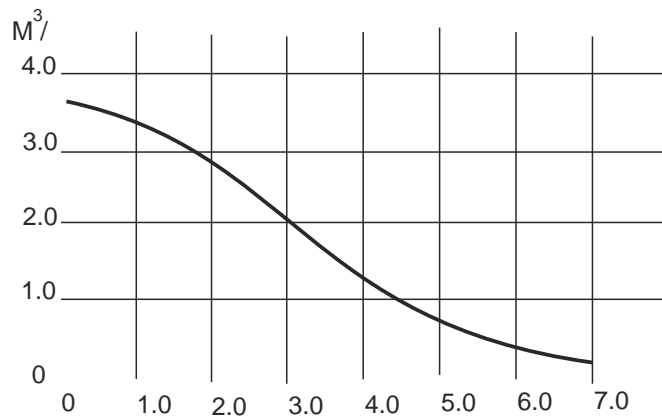
AP-200X -2.

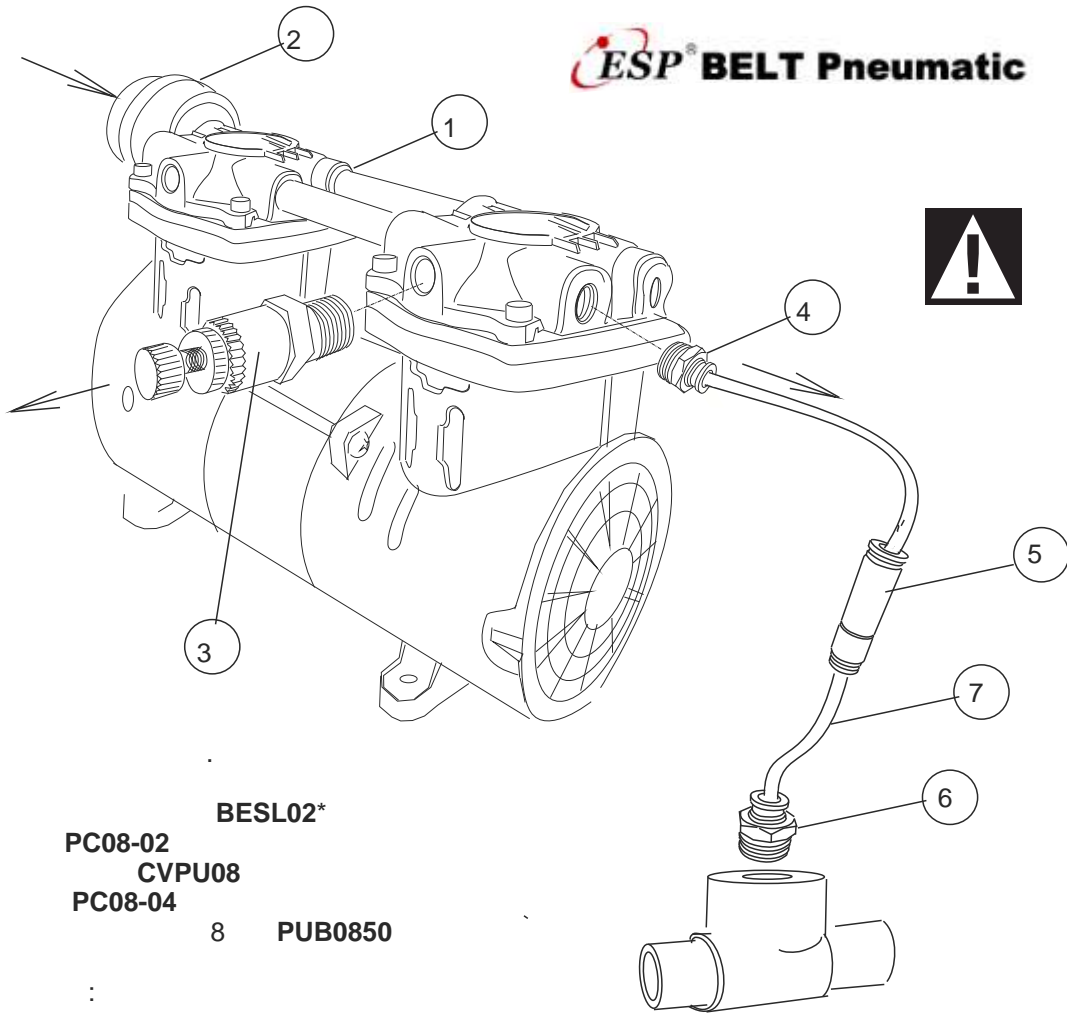


OLF295



Ī ēōāī ēā	Ī ī āāēü	Ōāōāēōāōēōēēē(ē,ī ēī ō Aāō)					Ī āēñ. Aāāēāī ēā(Aāō)		Ďāāī ēāy cāī ĩ.		Ī ī ū ī ī nōū(Āō)
		0,00	1.0	1,50	2.0	2,50	Ī ī nōī yī ī ī ā	Ī āōāçāī ōñēā	Min.	Max.	
AC 220	OLF295	65,00	58.3	53.3	48.3	40,00	7,00	8,00	-5,00	40,00	295,00

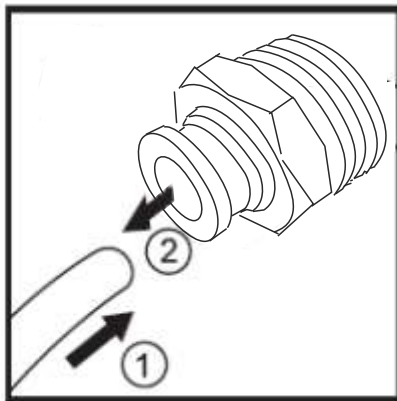




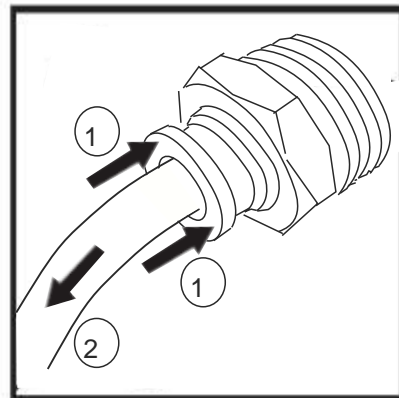
- 1.
 - 2.
 - 3.
 - 4.
 - 5.
 - 6.
 - 7.
- BESL02*
 PC08-02
 CVPU08
 PC08-04
 8 PUB0850

30-50%.

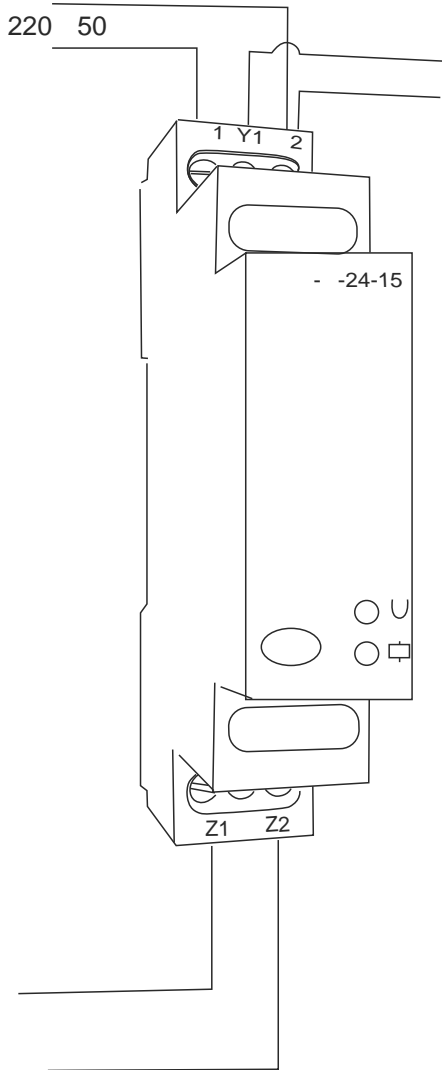
ARI



- 1)
- 2)



- 1)
- 2)



15 . E

(< 30 , 0,05) ,

15 .

Z1 ' Z2

Y1 A2

15

15 .

-2000 .

- 16 .

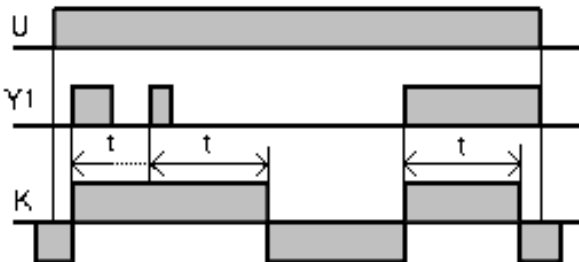
- 400 .



:

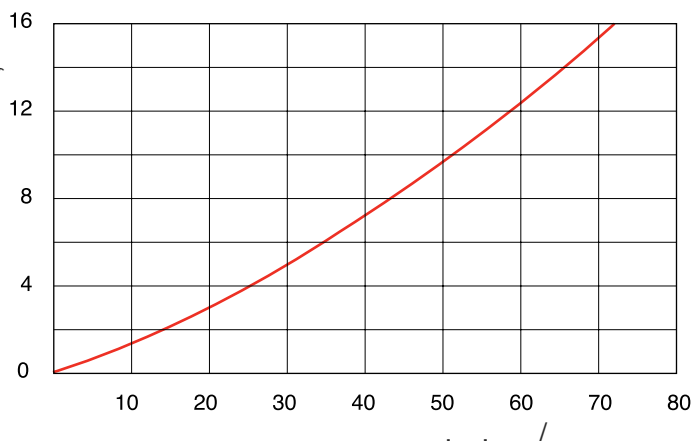
Y1 A2

1 A2,

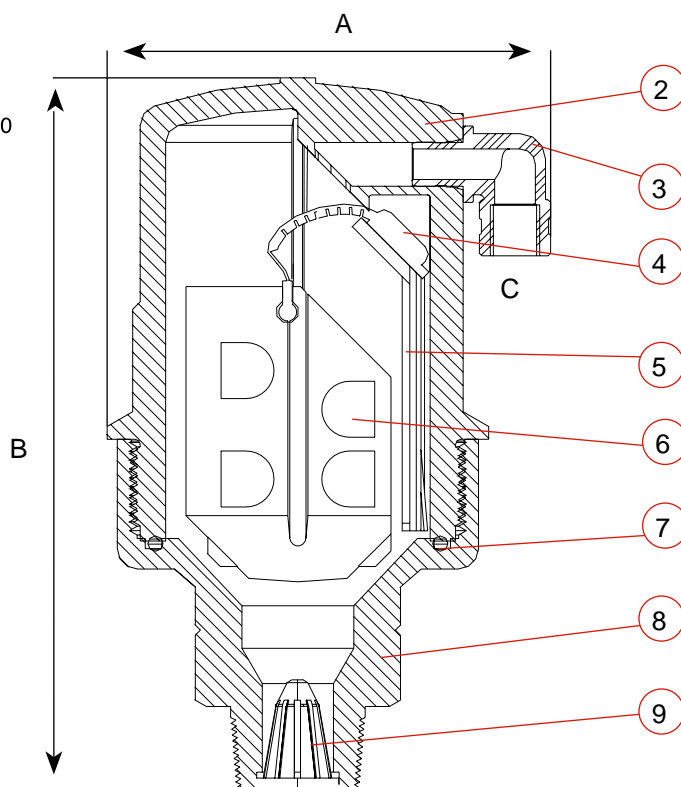


()

	mm			Kg.
	A	B	C	
S-050	87	143	1/8" BSP Female	0.3



No.		
1.	Body	Reinforced Nylon
2.	Discharge Outlet S-050	Polypropylene
3.	Rolling Seal	E.P.D.M.
4.	Clamping Stem	Reinforced Nylon
5.	Float	Foamed Polypropylene
6.	O-Ring	BUNA-N
7.	Base S-050	Reinforced Nylon
8.	Strainer	Nylon



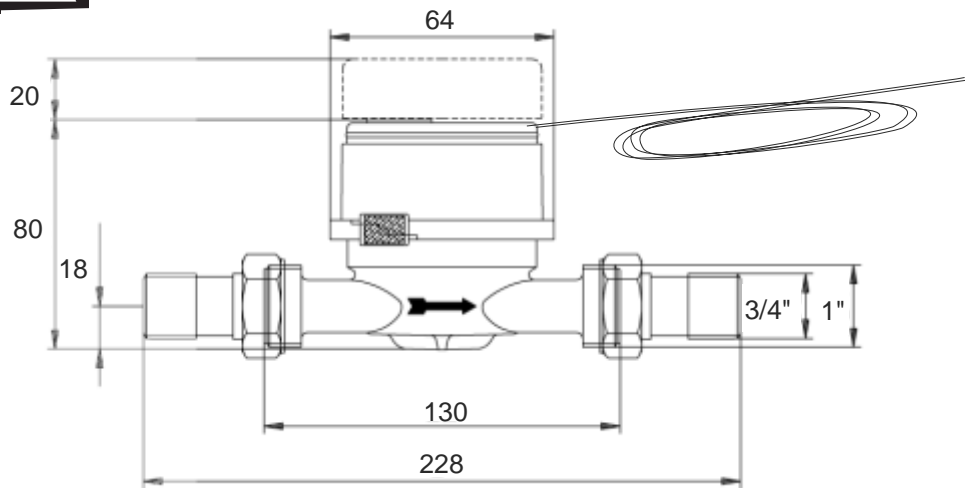
ARI
(8) (1)
(4), (5), (6).

(o e). (),
 (1 .1).
).



220

ZENNER



ETK-I Dn20

	Dy,
	20
, 3/ : , Qn	2,5
, Qmin	0,05
, Qmax	5,0
, 3/ ,	0,025
, 3	99 999
S, /(3/)2	0,25



- .
- .
-
-
-
-
-



- ,
- 0 - 40
- ,
-



1.

2.

3.

(,)

,

,

,

,

,

,

,

.

,

,

1.

2.

3.

4.

5



-
-
-
-
-
()



	“ ”
	111398, , .16 +7 (495) 940-87-92 +7 (495) 943-72-86
